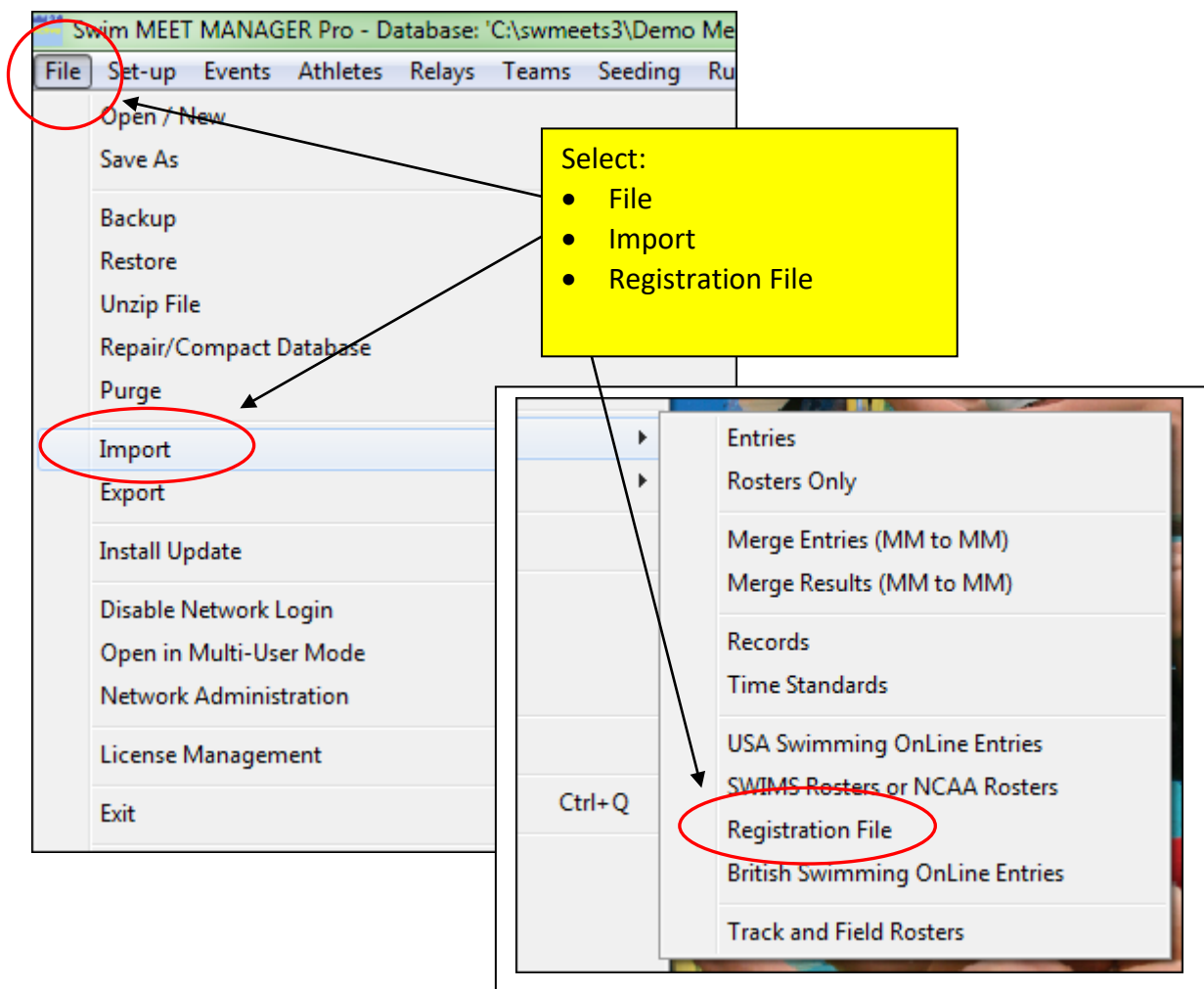


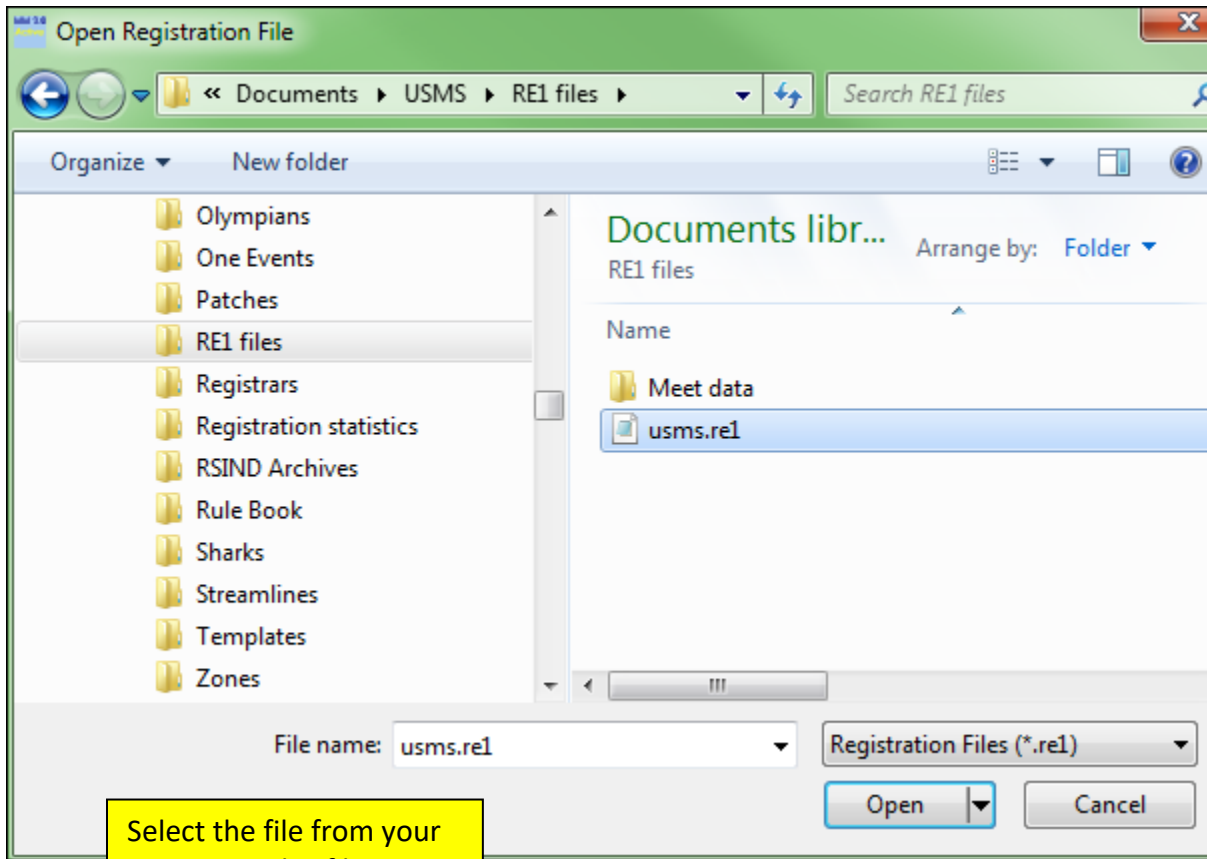
Importing a Registration File (RE1 file) into Hy-Tek's Meet Manager software

A meet director can obtain a registration file from an LMSC registrar. This file contains the basic registration data (name, club, USMS number, birthdate) for the members of the selected LMSC. The file can be imported directly into a meet database in the Hy-Tek Meet Manager software.

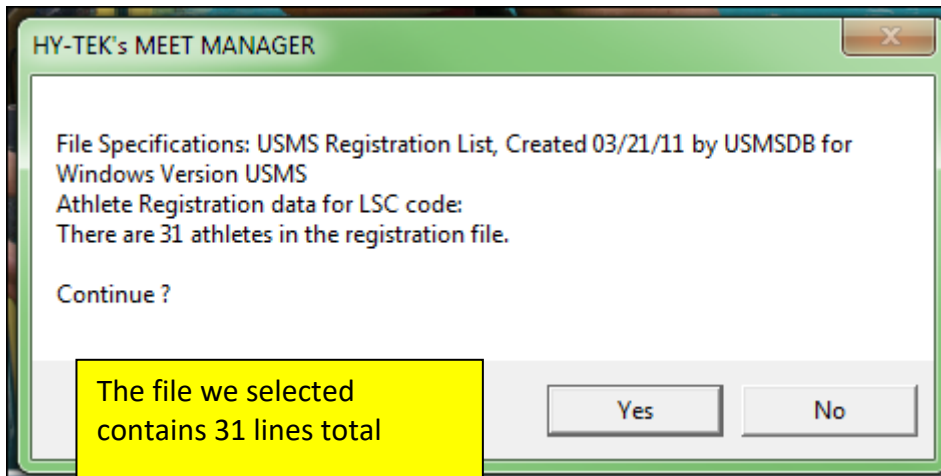
The registration file will have an extension of .RE1. In the following example, the file name is usms.re1.

Before you can import a registration file, you must have already set up the meet in the File >> Set-up screen.

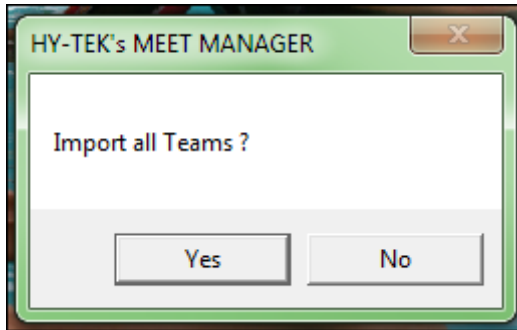




Select the file from your computer; this file is named "usms.re1"



The file we selected contains 31 lines total



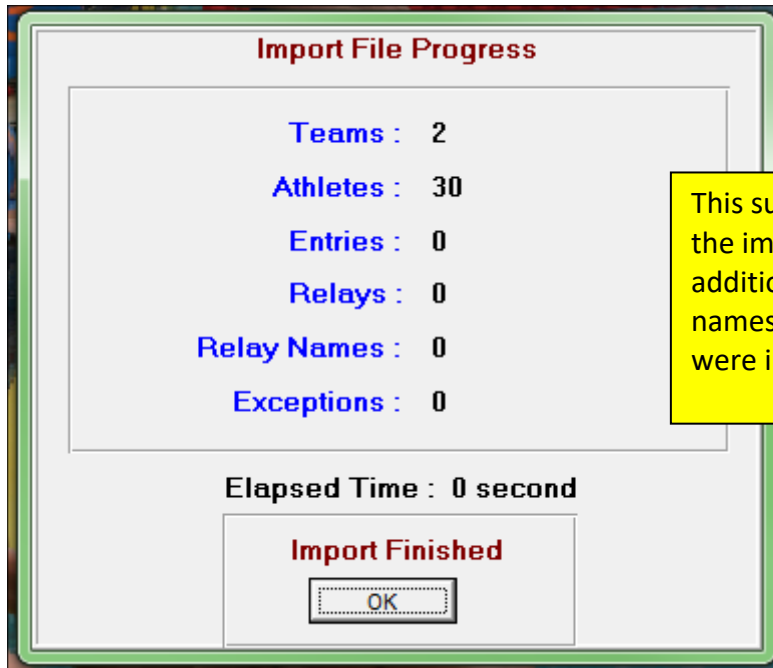
Select yes



Select yes to add the new athletes to the database



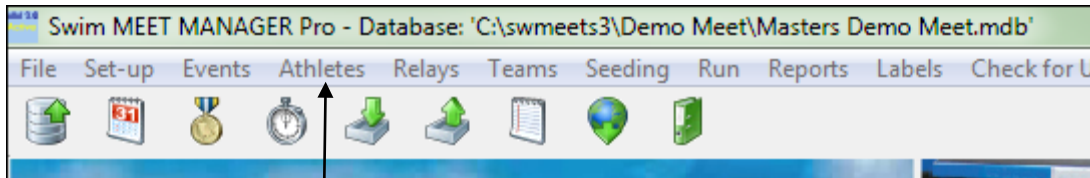
The file contained 31 lines; the first line was a header line. It contained 30 athletes.



This summary shows that the import is complete. In addition to the athlete names, two team names were imported.

Viewing the Athletes

To view the list of athletes, select Athletes from the main menu.



Select Athletes

